

REVISIONS		
REV. NO.	DESCRIPTION	DATE

BORING NO. B-13

STA. 1550+33; OFFSET: 0 FEET OF CRL
 WATER LEVEL CHECK: 8.0 DCI
 (7/25/2012)

BORING NO. B-14

STA. 1550+95; OFFSET: 0 FEET OF CRL
 WATER LEVEL CHECK: 16.5
 (7/25/2012)

BORING NO. B-15

STA. 1552+43; OFFSET: 0 FEET OF CRL
 WATER LEVEL CHECK: 14.0
 (7/31/2012)

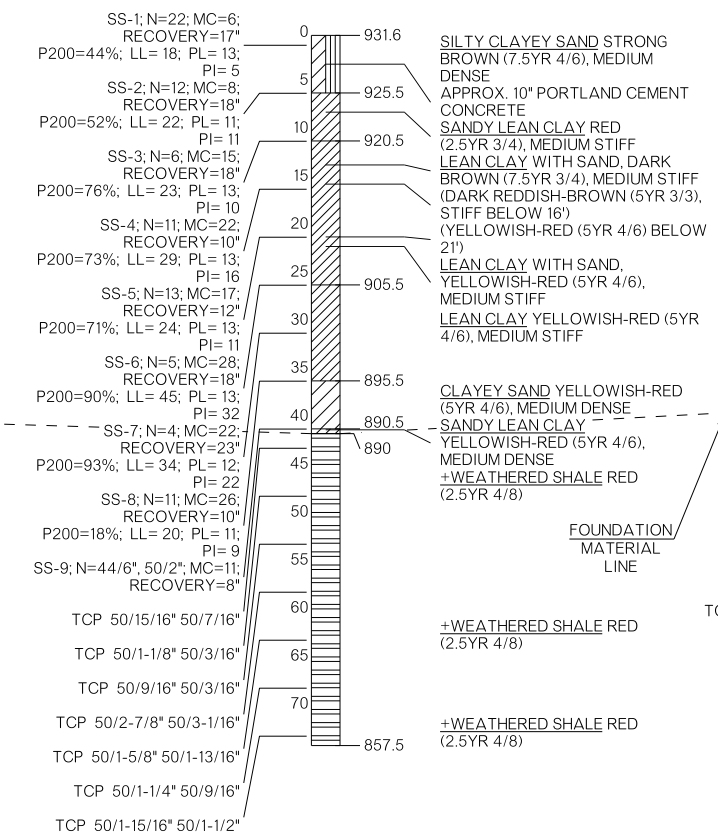
BORING NO. B-16

STA. 1553+23; OFFSET: 0 FEET OF CRL
 WATER LEVEL CHECK: 10.0 WCI
 (7/31/2012)

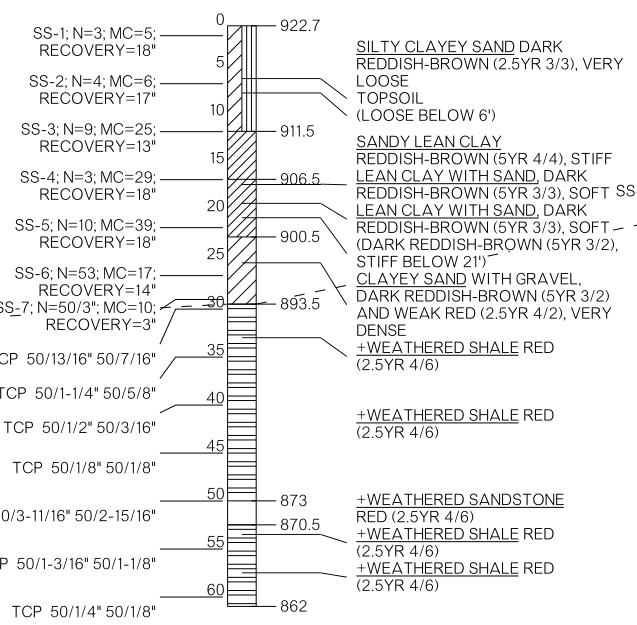
960
940
920
900
880
860
840

960
940
920
900
880
860
840

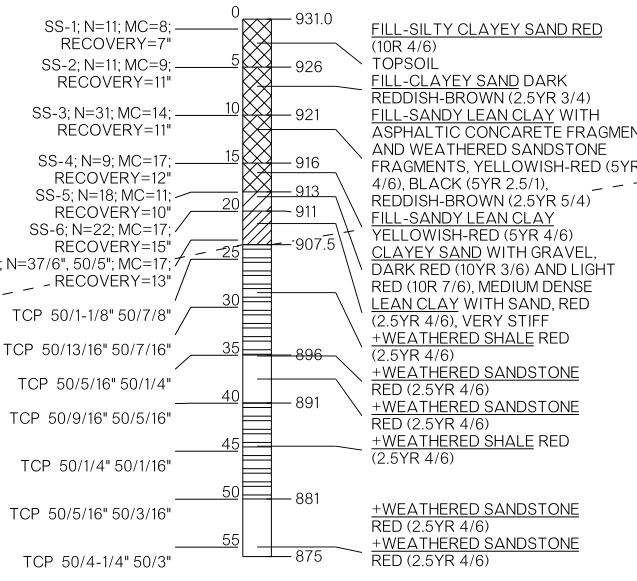
APPROX. SURFACE ELEV.: 931.6 FT



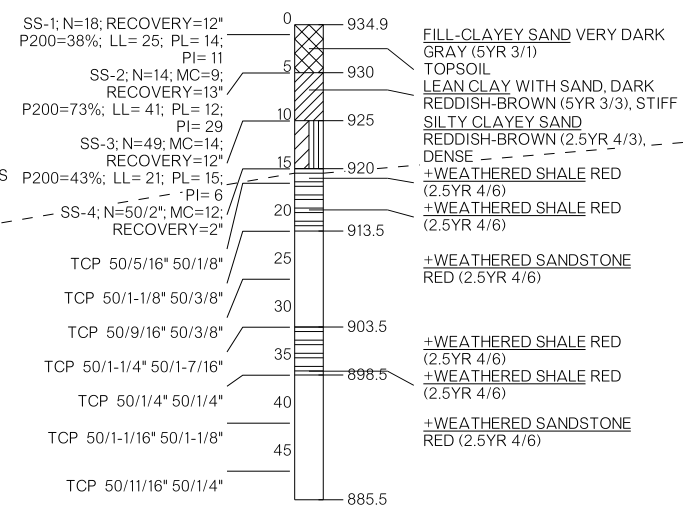
APPROX. SURFACE ELEV.: 922.7 FT



APPROX. SURFACE ELEV.: 931.0 FT



APPROX. SURFACE ELEV.: 934.9 FT



FOUNDATION MATERIAL LINE

BRIDGE "A" SH-33 OVER COTTONWOOD CREEK		LOGAN COUNTY		Design	GT	11/15
FOUNDATION REPORT (SHEET 4 OF 6)				Detail	SBE	11/15
				Check	JCH	11/15
STATE OF OKLAHOMA				DEPARTMENT OF TRANSPORTATION		Squad: PEARSON Eng: HERNANDEZ
JOB/PIECE NO. 21860(04)		SHEET NO. B008				